

CONTOUR

Storyteller Version 3.06

Release Notes

March 7, 2011

Supported Platform(s):

- Intel based Macs with OSX 10.5 or later
- PCs w/Win XP (SP2), Vista or Win7

Storyteller 3.06 includes the following fixes:

- Select movie library location
- Firmware updating
- Crash reporting
- Configure autoplay on Windows

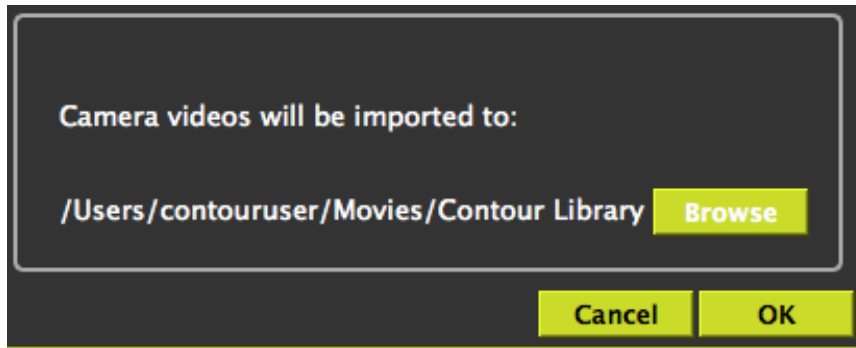
Feature details

Select Library Location:

In the preferences panel within Storyteller, users can now specify the directory where movies will be stored and accessed. This may be an external drive. Additionally, users will have the flexibility of switching between multiple libraries if desired.

Here's how you can setup a new library location if you have existing movies you want to manage:

1. Move all the files from the existing "Contour Library" to the new directory. Be sure to include the contour.db and the ThumbnailImages folder and its contents.
2. Open Storyteller
3. Open the preferences dialog and change where videos will be imported to the new directory:



4. Hit 'ok' and it should be finished.

Firmware update (for ContourGPS)

Now when you connect your camera and launch Storyteller we will check to see if new firmware is available for your camera. You do need to be connected to the Internet for this feature to work. If there is a new firmware version available, you will be prompted to update. If you choose to update the FW, Storyteller will copy the appropriate file to your camera. You will then need to follow the instructions to flash the FW update on the camera. These instructions display in Storyteller and are available on our website (<http://contour.com/software/firmwaregps>).

Crash Reporting

We know Storyteller has stability issues and people experience crashes. To try and better address these in future versions, we have added a feature to allow you to send Storyteller crash details to us.

Configure Autoplay on Windows

People will now be able to change whether or not Storyteller starts automatically on camera connection. This is controlled within the Preferences dialog.

Fixed Issues:

- Map not displaying with videos in some cases
- GPS data not displaying after 12:26 on Mac
- Several specific crashing instances
- GPS stops moving at 16:40
- Window location now preserved when ST is quit and then restarted

Known Issues:

- Storyteller may crash when switching to full screen on XP or Vista
- Missing play/pause controls when in full screen
- Map Window Is Hidden When Info Window is Shown
- Storyteller App crashing issues